

Christ My Refuge

Poem by:
Mary Baker Eddy

Music by:
Robert Collister

Medium High Voice

www.WatchFireMusic.com -- Published Under License from Publisher
Notice: Purchasers of this musical file are entitled to use 2 copies for their personal enjoyment and musical fulfillment.
Any other duplication, adaptation, arranging and/or transmission of this copyrighted music
requires written consent of the copyright owners.
Unauthorized uses are infringements of the copyright laws of the United States and other countries
and may be subject the user to civil and/or criminal penalties.



Whispering Chimes Music
685 Park Vista Trail
Webster, NY 14580
rcollister@whisperingchimesmusic.com

Christ My Refuge

Words by:
Mary Baker Eddy

Music by:
Robert Collister

www.WatchFireMusic.com -- Published Under License from Publisher Notice: Purchasers of this musical file are entitled to use 2 copies for their personal enjoyment and musical fulfillment. Any other duplication, adaptation, arranging and/or transmission of this copyrighted music requires written consent of the copyright owners. Unauthorized uses are infringements of the copyright laws of the United States and other countries and may be subject to civil and/or criminal penalties.

mp $\text{♩} = 82$

O'er

5

wait - ing harp - strings of the mind There sweeps a strain, Low,

p a tempo

9

sad, and sweet, whose meas - ures bind The pow - er of

cresc.

Christ My Refuge

12 *mf rit.* . *mp a tempo*

pain, And wake a white-winged an - gel throng Of

mp rit. . . . *p a tempo*

15 *f*

thoughts, il - lumed By faith, and breathed in rap - tured__

f

18 *decresc.* . *rit.* . . . *mp* *mf*

song, With__ love per - fumed. Then__

decresc. . *rit.* . . . *mp*

Christ My Refuge

22

His un - veiled, sweet mer - cies show Life's bur - dens

mf

Detailed description: This block contains the musical notation for measures 22, 23, and 24. The vocal line is in a treble clef with a key signature of three flats (B-flat major or D-flat minor). The lyrics are "His un - veiled, sweet mer - cies show Life's bur - dens". The piano accompaniment is in a grand staff (treble and bass clefs). The dynamic marking *mf* is placed in the piano part. The music features a mix of quarter and eighth notes, with some notes beamed together.

25

light. I kiss the cross, and wake to know A

cresc. . . .

cresc. . . .

cresc. . . .

Detailed description: This block contains the musical notation for measures 25, 26, and 27. The vocal line continues with the lyrics "light. I kiss the cross, and wake to know A". The piano accompaniment features a *cresc.* (crescendo) marking in both the treble and bass staves. The music includes a key signature change from three flats to four flats (C minor or F major) between measures 25 and 26. The piano part includes chords and moving lines in both hands.

28

world more bright. A world more bright.

rit. . . . *molto rit.* *mp a tempo*

rit. . . . *molto rit.* *mp a tempo*

Detailed description: This block contains the musical notation for measures 28, 29, 30, and 31. The vocal line concludes with the lyrics "world more bright. A world more bright.". The piano accompaniment features a *rit.* (ritardando) marking in the first two measures, followed by a *molto rit.* (molto ritardando) marking, and finally a *mp a tempo* (mezzo-piano, a tempo) marking in the last two measures. The music includes a key signature change from four flats to three flats (B-flat major or D-flat minor) between measures 30 and 31. The piano part includes chords and moving lines in both hands.

Christ My Refuge

32

mf

And o'er earth's trou- bled,

mf

36

cresc. . . .

f

an - gry sea I see Christ walk, And come to me, and—

cresc. . . .

f

40

molto rit.

slower

mp

// f

ten - der - ly, Di - vine - ly— talk. Thus

molto rit.

slower

mp

//

Christ My Refuge

43

faster



Truth en - grounds me on the__ rock, Up - on Life's__

faster f



46

cresc.



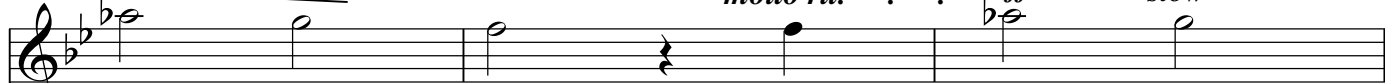
shore, 'Gainst which the winds and waves can__ shock, Oh,

cresc.



49

molto rit. . . . *ff* *slow*



nev - er - more! Oh, nev - er -

molto rit. . . . *ff* *slow*



Christ My Refuge

52 // *mp a tempo*

more! From tir-ed joy and grief a - far, And near - er___ Thee,

p a tempo

57 *cresc. . . . rit.*

Fa - ther, where Thine own chil - dren_ are, I love___ to___

cresc. . . . rit. .

60 *mf a tempo*

be. My prayer, some dai - ly good to do to Thine,___ for___

mf a tempo

Christ My Refuge

64 *molto rit.* // *mp*

Thee; An of - fering pure_ of_ Love, where - to

67 *slow* *a tempo* *mp* *molto rit.* . . .

God lead - eth me. God lead - eth me.

slow *mp* *a tempo* *molto rit.* . . . *p*

8vb